

# Dillon Middle School, SC 2006-09

- Avg. Increase of 3.1 Grade Levels in Literacy (28 Students – MAP Assessment)
- 36% drop in discipline referrals
- Students who met Reading Target
  - 2006-07 = 33%
  - 2007-08 = 54%

Instructional Time: 3 -5 X per week

Groups: 3-5 students per group

Middle School Grades 6-8

# Kindergarten Class #1

Intensive Program			Strategic Program			Core		
Beg ISF	Mid PSF	Reached Goal	Beg ISF	Mid PSF	Reached Goal	Beg ISF	Mid PSF	Reached Goal
4	8	no	3	30	yes	8	3	no
3	11	no	1	3	no	16	55	yes
3	26	yes	11	43	yes	11	13	no
			7	14	no	16	38	yes
			5	17	no	26	17	no
			9	12	no	8	38	yes
			6	11	no			
			0	10	no			
			8	10	no			
<b>33% effective</b>			<b>22% Effective</b>			<b>50% Effective</b>		
<b>Last Year: 0%</b>			<b>33%</b>			<b>60%</b>		

# Kindergarten Class #2

Intensive Program			Strategic Program			Core		
Beg ISF	Mid PSF	Reached Goal	Beg ISF	Mid PSF	Reached Goal	Beg ISF	Mid PSF	Reached Goal
3	15	No	7	22	Yes	26	51	Yes
4	31	Yes	12	43	Yes	16	50	Yes
1	27	Yes	0	20	Yes	21	57	Yes
0	13	No	13	22	Yes	13	45	Yes
			5	40	Yes	9	39	Yes
			10	31	Yes	21	46	Yes
			7	39	Yes			
			9	30	Yes			
<b>50% effective</b>			<b>100% Effective</b>			<b>100% Effective</b>		
<b>Last Year: 0%</b>			<b>33%</b>			<b>50%</b>		

# Kindergarten Class #3

Intensive Program			Strategic Program			Core		
Beg ISF	Mid PSF	Reached Goal	Beg ISF	Mid PSF	Reached Goal	Beg ISF	Mid PSF	Reached Goal
4	5	No	4	23	Yes	9	39	Yes
1	4	No	1	8	No	30	38	Yes
4	5	No	22	48	Yes	18	24	Yes
5	28	Yes	8	5	No	18	47	Yes
7	48	Yes	0	36	Yes	17	47	Yes
0	10	No				9	43	Yes
<b>33% effective</b>			<b>60% Effective</b>			<b>100% Effective</b>		
<b>Last Year: 0%</b>			<b>0%</b>			<b>44%</b>		

# Kindergarten Class #4

Intensive Program			Strategic Program			Core		
Beg ISF	Mid PSF	Reached Goal	Beg ISF	Mid PSF	Reached Goal	Beg ISF	Mid PSF	Reached Goal
2	13	No	4	24	Yes	10	39	Yes
2	24	Yes	5	29	Yes	41	40	Yes
5	8	No	4	27	Yes	17	40	Yes
			6	43	Yes	38	41	Yes
			4	37	Yes	9	32	Yes
			5	39	Yes			
			14	21	Yes			
			6	8	Yes			
			7	67	Yes			
			14	33	Yes			
<b>33% effective</b>			<b>100% Effective</b>			<b>100% Effective</b>		
<b>Last Year: 0%</b>			<b>33%</b>			<b>86%</b>		

# Kindergarten Class #5

Intensive Program			Strategic Program			Core		
Beg ISF	Mid PSF	Reached Goal	Beg ISF	Mid PSF	Reached Goal	Beg ISF	Mid PSF	Reached Goal
7	17	No	0	22	Yes	33	33	Yes
5	1	No	9	0	No	20	29	Yes
5	13	No	4	20	Yes	21	11	No
3	15	No	4	4	No	10	26	Yes
			6	21	Yes	10	31	Yes
			17	22	Yes			
			12	14	No			
<b>0% Effective</b>			<b>57% Effective</b>			<b>80% Effective</b>		

No yearly comparative data

## Kindergarten Totals: 87 Students

Intensive			Strategic			Benchmark		
Beg	Mid		Beg	Mid		Beg	Mid	
20	9		39	22		28	56	
-11			-17			+ 28		

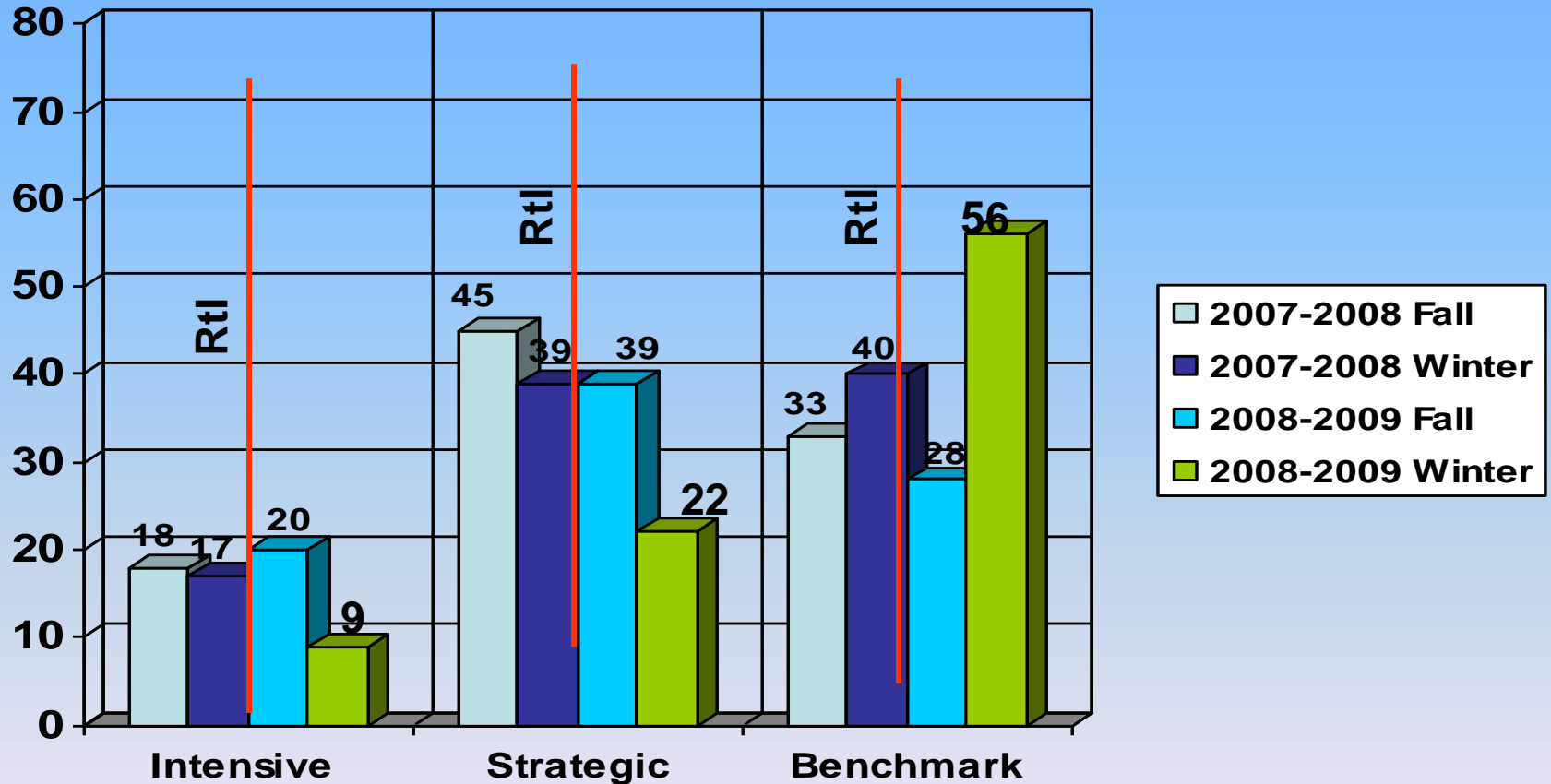
# Kindergarten NWF

Mid Year Results	2008	2009
Low Risk	49	78
Some Risk	18	7
At Risk	29	3

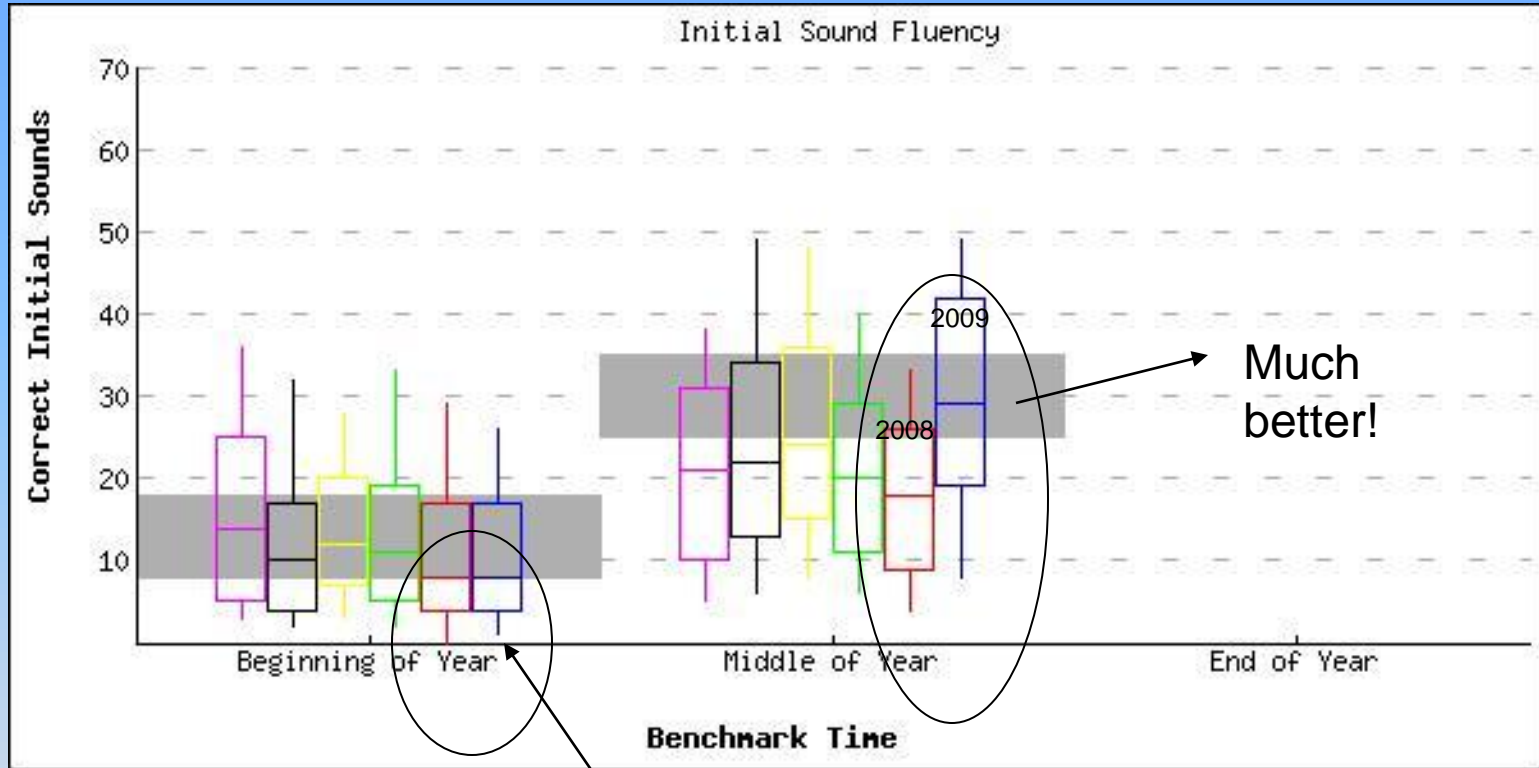


# Kindergarten

## Data Driven Instruction Implemented 2008-2009



# Cross Year Box Plot



We started about the same both years.

Much better!

# Cross Year Box Plot

